

Welcome to *The Right Stitch*,
The Embroiderers' Guild of America
Greater Pacific Region
Seminar 2024



Logo stitched by: **Tamra Donnelly**





Welcome

Welcome to GPR Seminar 2024!

*W*elcome to, **The Right Stitch**, GPR seminar 2024. I am so excited about all of the wonderful teachers and classes chosen for our seminar. We have a variety of techniques for you to try. This might be the year to challenge yourself and try a new technique that you have been thinking about. We have a fun evening event planned with, **Stitch Bingo**, (thank you Robin). Check out the instructions on the website to stitch your bingo card. I look forward to seeing everyone, catching up with friends and meeting new ones, who share the common love of needlework.

See all of you in sunny San Rafael.


Celia Rifkin
 Chair, GPR Seminar 2024

*W*e hope you will join us at The Right Stitch, Greater Pacific Region's 2024 Seminar. It is open to all members of EGA, not just GPR, so please spread the word. Not a member, join EGA and come learn with us! Stitching with friends, new and old. Learning new forms of embroidery in addition to all the wonderful hints and tips from National teachers. The rooms are all suites and breakfast is included; as is a social hour. Fun events and all in a lovely newly renovated hotel with easy access from San Francisco airport. Mark your calendars for July 19-25, 2024 and registration opens January 1, 2024. Check back on the website often as we will be posting more fun and special opportunities as details are finalized!

Robin Berry
 Region Director Greater Pacific Region





Schedule

Tentative Schedule

The following schedule is provided to help you plan your time during Seminar. The final schedule, with locations for classes and activities, will be provided in the student handbook at Seminar.

Friday, July 19	Registration	2:00 pm - 5:00 pm
	No Host Reception	6:00 pm - 7:00 pm
	Welcome Banquet	7:00 pm - 9:00 pm
Saturday, July 20	Seminar Central: Information Desk, Exhibits & More	7:30 am - 5:30 pm
	Silent Auction	7:30 am - 5:30 pm
	Classes	8:30 am - 4:30 pm
	Merchandise Night	6:30 pm - 8:30 pm
Sunday, July 21	Seminar Central: Information Desk, Exhibits & More	7:30 am - 5:30 pm
	Silent Auction	7:30 am - 5:30 pm
	Classes	8:30 am - 4:30 pm
	Teacher Showcase	4:30 pm - 5:30 pm
	Stitch Bingo	7:00 pm - 9:00 pm
Monday, July 22	Seminar Central: Information Desk, Exhibits & More	7:30 am - 5:30 pm
	Silent Auction	7:30 am - 5:30 pm
	Classes	8:30 am - 4:30 pm
	Meet up for Education Outreach discussion	Noon - 1:00 pm
	Stitching in your PJ's	7:30pm - 9:30pm
Tuesday, July 23	Seminar Central: Information Desk, Exhibits & More	7:30 am - 5:30 pm
	Silent Auction	7:30 am - 5:30 pm
	Classes	8:30 am - 4:30 pm
Wednesday, July 24	Seminar Central: Information Desk, Exhibits & More	7:30 am - Noon
	Silent Auction	7:30 am - Noon
	Classes	8:30 am - 4:30 pm
	Silent Auction Pickup	4:30 pm - 5:30 pm
	No Host Reception	6:00 pm - 7:00 pm
	Farewell Banquet	7:00 pm - 9:00 pm

Banquets are ticketed events and are included in your registration depending on whether you are registered for that day's activities. See the detailed registration instructions, available one week prior to the start of registration, for the description of the fees and which banquets are included with your registration.



General Class Information

Read the class descriptions carefully!

Photographs are helpful in some instances, but they cannot describe the technique, materials, level of difficulty, or objective of the class. Every effort has been made to carefully and thoroughly describe each class. Rely on the class description as the primary guide in choosing your class(es).

To assist you in selecting a class at an appropriate skill level, please be familiar with the following EGA level definitions. Remember, the definitions pertain to the technique being taught, not your overall skill level.

BasicNo experience with the technique being taught.

IntermediateKnowledge of basic stitches and materials and their uses in the technique being taught.

AdvancedAbility to execute simple and difficult stitches in the technique being taught, knowledge of color and design which will allow for exploration and creativity.

All LevelsSuitable class for all levels of experience in the technique being taught.

Some classes request the student bring “usual stitching supplies,” which refers to those items of general use that all students will have available in their own supplies. The light in the classrooms is not always sufficient for stitching and it is highly recommended that students bring **Battery operated lights**. See Frequently Asked Questions (FAQs) on page 38 for more details.

All classes meet for a morning and afternoon session, with 15 minute breaks during each session. There is a two hour lunch break, which provides you enough time to eat lunch, see the exhibits, and visit with friends.

Morning Session	8:30 am - 11:30 am
Morning Break	10:00 am - 10:15 am (approximately)
Lunch Break	11:30 am - 1:30 pm
Afternoon Session	1:30 pm - 4:30 pm
Afternoon Break	3:00 pm - 3:15 pm (approximately)



List of Classes Offered

Days	Class #	Class Name	Teacher	Page
Sat / Sun	201	Crown of Pearls	Eileen Bennett	7
Sat / Sun	202	Ode to the Honeybee	Celeste Chalasani	8
Sat / Sun	203	Monet Kimono	Toni Gerdes	9
Sat / Sun	204	Porthole	Wendy Innes	10
Sat / Sun	205	A Garden View	Deborah Mitek	11
Sat / Sun	206	Highland Circle	Kathy Rees	12
Sat / Sun	207	The Dickcissel's Prairie Ort Box	Canby Robertson	13
Sat / Sun	208	Starfish Heart Pendant	Amee Sweet-McNamara	14
Sat / Sun / Tues / Wed	401	Twice the Taste	Melinda Sherbring	15
Sat / Sun / Tues / Wed	402	Lanterns	Kay Stanis	16
Monday	101	Strawberry Fair Sampler	Eileen Bennett	17
Monday	102	Fall Daze	Celeste Chalasani	18
Monday	103	Noel	Toni Gerdes	19
Monday	104	Wildflower Fields / Monogram	Deborah Mitek	20
Monday	105	Holiday Box	Kathy Rees	21
Monday	106	Boxes Galore!	Canby Robertson	22
Monday	107	Flecked Flowers in Hearts	Melinda Sherbring	23
Monday	108	Pinwheel Pleasure	Kay Stanis	24
Monday	109	Indulgence Earrings	Amee Sweet-McNamara	25
Mon / Tues / Wed	301	Daffodils and Violas	Wendy Innes	26
Tues / Wed	251	Little Red Strawberries Sampler	Eileen Bennett	27
Tues / Wed	252	Berried Treasure	Celeste Chalasani	28
Tues / Wed	253	Larry the Patchwork Lion	Toni Gerdes	29
Tues / Wed	254	Butterfly Sunset	Deborah Mitek	30
Tues / Wed	255	Beaded Bermuda Reef	Kathy Rees	31
Tues / Wed	256	Diminutive Rose	Canby Robertson	32
Tues / Wed	257	Aperture	Amee Sweet-McNamara	33

See page 6 for a calendar view of the class schedule.

See the teacher information starting on page 34.



Day at a glance

List of Classes Offered - Calendar View					
Teacher	Saturday 7/20	Sunday 7/21	Monday 7/22	Tuesday 7/23	Wednesday 7/24
Eileen Bennett	201 Crown of Pearls Sampler Intermediate - Advanced Pulled Thread	201 Crown of Pearls Sampler Intermediate - Advanced Pulled Thread Kit Fee \$ 100	101 Strawberry Fair Sampler Intermediate - Advanced Counted Thread Kit Fee \$ 55	251 Little Red Strawberries Sampler Intermediate - Advanced Counted Thread	251 Little Red Strawberries Sampler Intermediate - Advanced Counted Thread Kit Fee \$ 88
Celeste Chalasani	202 Ode to the Honeybee Intermediate Stumpwork	202 Ode to the Honeybee Intermediate Stumpwork Kit Fee \$ 115	102 Fall Daze Basic Stumpwork Kit Fee \$ 35	252 Berried Treasure Intermediate Stumpwork	252 Berried Treasure Intermediate Stumpwork Kit Fee \$ 85
Toni Gerdes	203 Monet Kimono Intermediate Needlepoint	203 Monet Kimono Intermediate Needlepoint Kit Fee \$ 190	103 Noel Intermediate Needlepoint Kit Fee \$ 105	253 Larry the Patchwork Lion Intermediate Needlepoint	253 Larry the Patchwork Lion Intermediate Needlepoint Kit Fee \$ 185
Wendy Innes	204 Porthole Intermediate Stumpwork	204 Porthole Intermediate Stumpwork Kit Fee \$ 75	301 Daffodils and Violas Intermediate Stumpwork	301 Daffodils and Violas Intermediate Stumpwork	301 Daffodils and Violas Intermediate Stumpwork Kit Fee \$ 60
Deborah Mitek	205 A Garden View Basic - Intermediate Silk Ribbon Embroidery	205 A Garden View Basic - Intermediate Silk Ribbon Embroidery Kit Fee \$ 130	104 Wildflower Fields / Monogram All Levels Silk Ribbon & Canvas \$ 95	254 Butterfly Sunset All Levels Silk Ribbon Embroidery	254 Butterfly Sunset All Levels Silk Ribbon Embroidery Kit Fee \$ 125
Kathy Rees	206 Highland Circle Intermediate Counted Canvas	206 Highland Circle Intermediate Counted Canvas Kit Fee \$ 115	105 Holiday Box Basic - Intermediate Counted Canvas \$ 59	255 Beaded Bermuda Reef Intermediate Counted Canvas / Beads	255 Beaded Bermuda Reef Intermediate Counted Canvas / Beads Kit Fee \$ 110
Canby Robertson	207 The Dickissel's Prairie Orts Box Intermediate - Advanced Surface Embroidery	207 The Dickissel's Prairie Orts Box Intermediate - Advanced Surface Embroidery Kit Fee \$ 155	106 Boxes Galore! All Levels Box Construction \$ 65	256 Diminutive Rose Intermediate Crewel	256 Diminutive Rose Intermediate Crewel Kit Fee \$ 115
Melinda Sherbring	401 Twice the Taste Intermediate Elizabethan Raised-work	401 Twice the Taste Intermediate Elizabethan Raised-work	107 Flecked Flowers in Hearts All Levels Flecked Blackwork \$ 55	401 Twice the Taste Intermediate Elizabethan Raised-work	401 Twice the Taste Intermediate Elizabethan Raised-work Kit Fee \$ 85
Kay Stanis	402 Lanterns Intermediate Silk & Metal	402 Lanterns Intermediate Silk & Metal	108 Pinwheel Pleasure Beginner - Intermediate Silk & Metal \$ 52	402 Lanterns Intermediate Silk & Metal	402 Lanterns Intermediate Silk & Metal Kit Fee \$ 85
Ame Sweet-McNamara	208 Starfish Heart Pendant Basic - Intermediate Soutache & Beads	208 Starfish Heart Pendant Basic - Intermediate Soutache & Beads Kit Fee \$ 120	109 Indulgence Earrings Basic Bead Embroidery w/Shibori Ribbon \$ 70	257 Aperture Necklace Basic - Intermediate Soutache & Bead Embroidery	257 Aperture Necklace Basic - Intermediate Soutache & Bead Embroidery Kit Fee \$ 85

208

Starfish Heart Pendant

Amee Sweet McNamara

TWO DAY CLASS • Saturday / Sunday • 7/20 & 21

Project notes



Class Description:

Starfish Heart Pendant, Select a one-of-a-kind heart from, *The Mending Pile* - a series of handmade polymer clay cabochons made by Amee. Pair it with a, *Soutache & Bead Embroidery* kit and get ready to learn a special version of the "Flame Stitch" - appropriate for Adventurous Beginner and Intermediate soutache artists alike.

Project / Class Information

- Pre-work No
- Kit fee \$120
- Design area 4.5" x 4.5"
- Technique Soutache & Bead Embroidery
- Proficiency Basic - Intermediate
- Kit contents Ultrasuede, bead backing, Soutache - in four colors as well as metallic, instructions booklet, polymer clay heart, beads, True-2's, bobbin nymo thread, jump rings, beading needle, fabric glue.

In addition to the usual stitching supplies, student to bring

Students should come to class with a surface on which to work (bead-blanket or bead-tray), a good pair of sharp scissors and any additional Magnification / battery powered light if desired.

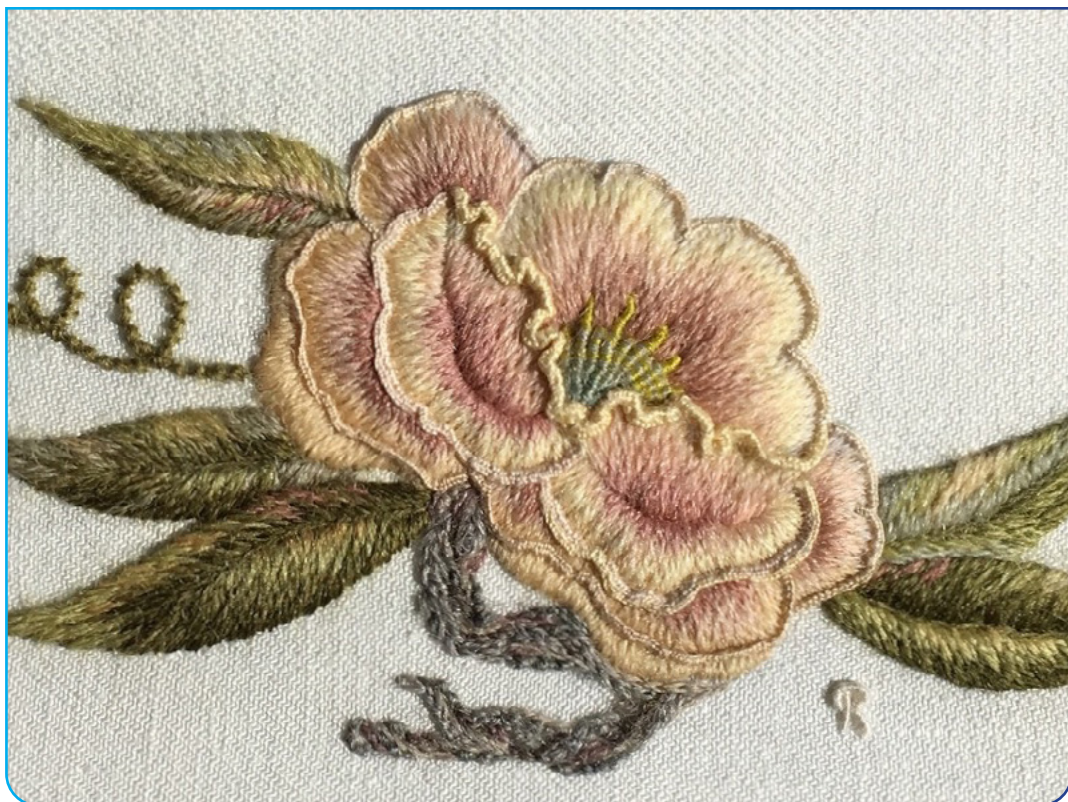
256

Diminutive Rose

Canby Robertson

TWO DAY CLASS • Tuesday & Wednesday • 7/ 23 & 24

Project notes



Class Description

This class will have three areas of emphasis; a.) To make a seamless and even transition of color using soft shading. b.) To give the illusion of a third dimension on a 2 dimensional plane. And, c.) To give the illusion that a shape, like a leaf or a petal, can appear in front or behind another. Stitches to be covered in this class include chain, outline, wrapped outline, stem, coral knot, buttonhole, over-buttonhole, and crescent shaped spider.

Project / Class Information

Pre-work No
Kit fee \$115
Design area 3" x 5"
Technique Crewel Embroidery
Proficiency Intermediate
Kit contents Approximately 20 values of Appletons crewel wool, linen twill with transfer, crewel needles, instructions with photo.

In addition to the usual stitching supplies, student to bring

5" or 6" hoop that can be tightened or stretcher bars. Magnification / battery powered light if desired.



Our Faculty



Eileen Bennett

Eileen Bennett, designer, historian, author, lecturer, teacher is a recognized expert in the art of sampler stitching, much sought after in the United States and abroad for her encyclopedic knowledge of historic embroideries. Her *Red Book of Sampler Stitches*, containing over 73 clearly drawn stitch diagrams, continues to be one of the industries leading books on 'how-to-do' needlework. And for those wishing a quick course in sampler history, *The Evolution of Samplers... a 400 year time line* is a must have, must read book!

A contributor to America's leading needlework magazines, Eileen teaches at guild meetings, needlework shops and shows throughout the country. She has served on the Board of Advisors for Antique Sampler & Needlework Quarterly. She has executed commissions from the Grand Rapids, Michigan, Public Museum, and worked with the Ulster Folk Museum in Belfast, Northern Ireland. Eileen is currently the chairperson for Michigan's Sampler Survey... a nationwide search documenting Michigan's school-girl embroideries.

- Classes:** **101** Strawberry Fair Sampler on page 17
201 Crown of Pearls on page 7
251 Little Red Strawberries Sampler on page 27



Celeste Chalasani

Celeste Chalasani is an award winning designer and teacher specializing in Stumpwork. She has taught extensively both in person and virtually for the Embroiderers' Guild of America (EGA) at chapter workshops, regional and national seminars; the National Academy of Needlearts; other regional guilds; Quiltfest and Craftsy. She is a graduate of the Academy of Needlearts Teachers' Certification program specializing in Stumpwork.

Teaching Stumpwork is a labor of love for me. I am passionate about sharing what I know. I approach teaching from the understanding that different people learn in different ways. I strive to provide clear written instructions with step-by-step color photos, orally explain the technique with color coded visual aids, demonstrate stitches and techniques, and work one on one with each student as they practice their techniques.

www.celestechalasani.com

- Classes:** **102** Fall Daze on page 18
202 Ode to the Honeybee on page 8
252 Berried Treasure on page 28



Toni Gerdes

Toni Gerdes holds Teachers' certification from the National Academy of Needlearts specializing in canvas embroidery. She currently serves on the Board of NAN as the Director of Education after serving 5 years as Assistant Director of Teachers' Certification. She has also served on the Board of Directors for several ANG chapters as Program Chair & President. She is a past President of NETA. She has received numerous awards for her designs as well as, the prestigious NAN Lifetime Achievement Award. Toni has taught for NAN, EGA, and ANG, as well as guilds & shops. She has been published in Needlepointers, Needlepoint Now, and in Needle Arts as the Artist Across America. She enjoys all types of stitching and especially sharing her knowledge with others, She currently resides in Colorado. See pictures of her work at www.tonigerdes.com

- Classes:** **103** Noel on page 19
203 Monet Kimono on page 9
253 Larry the Patchwork Lion on page 29



Our Faculty



Wendy Innes

Wendy began her needlework journey at the young age of 7, under the instruction from her mother. She was fortunate to have inherited her father's artistic gene, that runs strong in her family. Wendy's early passion has evolved over the past 40 plus years and she has won a number of awards and accolades, as far back as high school. She has continued to demonstrate mastery with most recent multiple stumpwork designs published in the Australian *Inspirations Magazine* in Wendy has a passion for anything with a threaded needle and has been teaching many forms of needlework extensively for over 30 years in Canada, Australia, and the US with a specialty in Stumpwork.

Classes: 204 Porthole on page 10
301 Daffodils and Violas on page 26



Deborah Mitek

Deborah Mitek is a needlework designer and teacher specializing in silk ribbon embroidery and surface stitching on both fabric and canvas. Learning embroidery and knitting at an early age gave her a lifelong passion for all things needlework. As a long-time member of EAC, NAN, ANG & EGA, she teaches at the national, regional, and local levels. Her work has been featured in both Needle Arts and Needle Pointers magazines. Deborah is also the owner of Island Stitchery & Studio, a retail needlework shop.

Classes: 104 Wildflower Fields / Monogram on page 20
205 A Garden View on page 11
254 Butterfly Sunset on page 30



Kathy Rees

Kathy Rees learned to cross stitch at fourteen and has never stopped using a needle. After earning a business degree and working in the corporate world, she worked in her family's needlework shop for eighteen years. Kathy began designing, publishing, and teaching in 2006, specializing in geometrics, offering multiple colorways for many of her designs. She closed her shop in 2011 to design and teach full-time.

Classes: 105 Holiday Box on page 21
206 Highland Circle on page 12
255 Beaded Bermuda Reef on page 31



Canby Robertson

Canby Robertson has been designing and teaching embroidery, painting, and calligraphy for over 30 years. She has a degree in Fine art/art history and is an EGA Master Craftsman in crewel embroidery.

Classes: 106 Boxes Galore! on page 22
207 The Dickcissel's Prairie Ort Box on page 13
256 Diminutive Rose on page 32



Our Faculty



Melinda Sherbring

Melinda has examined Elizabethan-era embroidery at the Manchester Gallery of Costume, the National Museum of Scotland, the Los Angeles County Museum of Art, the DeWitt Wallace museum in Colonial Williamsburg, the Jamestown museum, and Boston's Museum of Fine Arts. That original draft book has been channeled into several instruction books incorporating what she has learned from the pieces themselves.

Melinda now teaches needlework locally and nationally, with designs rooted in history. Her first EGA Group Correspondence Course, *More Than a Rose*, came out in June 2016. Her second, *Sweet Bag Sewed of Silver & Gold* is currently an EGA lightning round project with registration open through November 30, 2023. She has taught at several national seminars. She appeared on TV in *Sew Much More* (episode SMM-102) discussing blackwork embroidery. She has written articles for EGA's *Needle Arts* magazine, and the Fall 2023 *Piecework* magazine. She has also posted a dozen papers with in-depth examinations of individual historical pieces on Academia.edu.

Melinda has been a member of the Embroiderer's Guild of America since 1991 and the American Needlepoint Guild since 1992. She earned a Master Needle Artist certificate through ANG in 2004, and is working her way through the EGA Counted Thread Master Craftsman program.

Classes: 107 Flecked Flowers in Hearts on page 23
401 Twice the Taste on page 15



Kay Stanis

Kay Stanis is an internationally known fiber artist, designer, Master Craftsman, and Certified and Graduate Certified Teacher of EGA and Kurenai Kai Traditional Japanese Embroidery. She has been and will be on the faculties of American Needlepoint Guild national seminars, Embroiderers' Association of Canada, EGA national and regional seminars, Callaway School of Needlearts, Koala Conventions, South Australia Embroidery Conference, Embroidery 2000 (New Zealand), and many independent groups. Her website is www.the-gilded-edge.com and she has recently published *Techniques of Metal Thread Embroidery*.

Classes: 108 Pinwheel Pleasure on page 24
402 Lanterns on page 16



Ameer Sweet-McNamara

Ask Ameer K. Sweet-McNamara why her fine-craft business is called *Ameer Runs with Scissors*, and she usually just laughs and says, *Because it sounds a whole lot sexier than Ameer Eats Paste*. Working out of her New Hampshire home, Sweet-McNamara makes one-of-a-kind hats, and wearable-art textile-jewelry using a variety of techniques including *Soutache & Bead Embroidery*. Ameer is the author of the books *Soutache and Bead Embroidery* and *Elegant Soutache*.

Classes: 109 Indulgence Earrings on page 25
208 Starfish Heart Pendant on page 14
257 Aperture Hi-Low Lariat-Style Necklace on page 33



Special Events and Activities

Silent Auction

Pictures of items will be posted on the website along with all the details. Items include full kits in many different techniques.

Payment is by check or Paypal – your designated choice and information must be on your bidder form. If Paypal, invoices must be paid prior to pick up. Pick up will be just prior to the no host reception on July 24 – 5:30 – 6 pm. (location TBD). Please bring your check – or Paypal confirm.

Everyone can bid – whether present or not. If you are not present, your “agent” must have written authority from you to bid and to collect the item. Form will be on the website.

Auction to benefit GPR

Opens: Saturday, July 20, 2024 7:30 am

Closes: Wednesday, July 24, 2024 NOON!

Location: Seminar Central

Merchandise Night - Saturday July 20th

This is the night to find many fascinating wares that could spark your next inspiration. Hopefully a few that you just can NOT live without. So be sure to bring your favorite form of payment with you whether it be your checkbook, credit cards or even the old favorite, CASH. Every seminar we have different vendors showing off their wares and I'm sure you will find something special.

If you or someone you know might like to participate being a vendor at Merchandise Night, the fee is \$35 for a half table or \$70 for a table and multiple tables may be reserved and those that need more space. The table fee includes a listing as a participating vendor on the seminar website with a link to your website and a listing in the printed seminar handbook. For more information and an application form, contact Christine Tanabe (ctanabe19@gmail.com).

Stitch Bingo - Sunday July 21st from 7pm - 9pm

Come join us for a fun evening of bingo and prizes. The catch is you create your own embroidered bingo board!

We have chosen 50 different stitches for you to choose from and each has multiple variations so let your imagination take flight! Each square will present a different type of stitch. You can do a board of simple stitches – just 5 examples of the chosen stitch per square. You can do a board with a simple pattern in each block, with or without name of stitch. You can go all artsy and fill each square where the majority of the square is the stitch or variations. Check out all the Stitch Bingo details on the website.

- You can use any type of thread. You can use any color of thread. Think about variation on one color or do a rainbow. Have fun with this.
- Remember the center square is a “free” square.
- It will also help to embroidery BINGO across the top of the columns/square and 12345 down one side of the square for each block.

Education Outreach - Monday July 22nd Noon - 1pm

Let'sTime has been set aside for Chapter Outreach persons to meet as a group to share what chapters are doing for outreach. This will be a good time to share ideas and resources.

PJ's Stitch In - Monday July 22nd from 7:30pm - 9:30pm

Let's gather downstairs in the bar area to have our own Seminar 2024 Pajama Party / Stitch in. We want to see what you have been working on in class so far. Come on down and share with the rest of us. I sure know that I would love to see what you have been learning because we can't all take the same classes at the same time, so let's all get inspired together. Come on down in your comfy clothes OR (as I'm looking forward to doing) wear your favorite Pajama's and let's have some fun. Just remember though, there are more classes to enjoy on Tuesday morning so make sure to not stay up too late!



Frequently Asked Questions

What is Seminar?

Seminar is a multi-day event where classes and other events are offered. Seminar provides an opportunity to learn from highly skilled and respected teachers in a small class setting. The teachers are hired to teach one-, two-, three- or four-day classes. The classes meet for a morning and afternoon session, with a long lunch break; there are also short morning and afternoon breaks to stretch your legs and rest your eyes.

How to choose a class as a newcomer to stitching?

An experienced seminar attendee once recommended choosing two classes: (a) Choose one from a teacher who is a long time teacher and master of a technique you want to learn; (b) Choose the other because it appeals to your inner artist. Do check that the classes are labeled Beginner or All Levels so as to not be frustrated with the learning experience.

What should I wear to class and for the banquets?

Wear comfortable clothes to class - casual pants, light-weight top, simple dress, and do bring a sweater or jacket as some rooms may be a bit cool. Do look at the class descriptions as you may want to bring an apron or other cover in classes that have paints or other messy materials. For the banquets, these are festive occasions and we encourage a more dressy attire.

What are the "usual stitching supplies"?

- Needles - a variety. Most kits have the necessary needles, but it never hurts to have a few of your own in an assortment of sizes and types.
- Needle Threader and Needle Puller
- Straight Pins with heads
- 6" Ruler
- Laying Tool
- Scissors - small sharp pointed embroidery scissors
- Note taking materials > pencils (black soft lead pencil for note taking and a couple of colored pencils for notations on the instruction sheets), eraser, small post it notes, and highlighter.
- Teacher specified method for maintaining tension - hoop, roller bars, frame with tacks or staple gun, or slate frame.
- For Beading Projects: bead mat, bead holders (2-6 small triangle trays), bead scoop, thread conditioner at the seminar.
- Personal, battery operated light. All student electronics, including task lights used in the classroom, must be battery operated. Don't forget to bring your Halo or other batteries!
- Also Good to Have: magnification, frame weight or clamp or embroidery stand, hand lotion, cover for your project, tweezers, magnets (2) for holding your needles out of the way, spool of sewing thread in neutral or pastel (not red), utility scissors, tape measure, pin cushion or other pin holder.



Registration Information

Registration Dates

Registration begins January 1, 2024 and ends March 31, 2024.

- January 1, 2024 - January 31, 2024 > **Premier Registration**
Registrations and payments received by the Registrar by 11:59 PM PST January 31, 2024 are considered Premier Registration and will be treated as equal. Class assignments in oversubscribed classes will be made by lottery among those registering during the Premiere Registration period.
- February 1, 2024 - February 28, 2024 > **Open Registration**
Registrations and payments received by the Registrar during this period will be accepted for available classes. If registration for a particular class is low, it may be canceled prior to the conclusion of Open Registration. Class assignments in classes which become oversubscribed during the Open Registration will be made by lottery among those registering during Open Registration. Registrants who registered during Premiere Registration for slots in that class will retain their assignments.
- March 1, 2024 - March 31, 2024 > **As Available Registration**
Registrations and payments received by the Registrar during this period will be accepted if space is available in the class and by permission of the teacher.

Registration Fees

Please note, class fees include the specified number of class days, hospitality items, and banquets as listed. Hospitality items include a seminar pin, a seminar tote bag, seminar handbook, and other goodies. Please note, class fees do not include kit fees.

- Non-Refundable Registration Fee \$125 assessed of all registrants.
- 5 days of class \$650 Any combination which adds up to 5 days of class, two banquets, and hospitality items.
- 4 days of class \$550 Any combination which adds up to 4 days of class, two banquets, and hospitality items.
- 3 days of class \$450 Any combination which adds up to 3 days of class, one banquet, and hospitality items.
- 2 days of class \$325 Any combination which adds up to 2 days of class and hospitality items - one banquet is included.
- 1 day of class \$125 Any single day of class and hospitality items - banquets are not included.
- Non-Student Fee \$175 Two banquets and hospitality items - classes are not included.
- Non-EGA Member Fee \$55 Assessed of participants who are not current EGA members.
- Commuter Fee \$250 Assessed of participants taking 2 or more days of classes and not staying at the seminar hotel.

Complete registration instructions will be available on the Seminar website one week prior to the start of registration.

[Click here for REGISTRATION FORM](#)



Cancellation & Covid-19 Policy

Cancellation Policy

- All cancellation notifications must be submitted in writing (email is acceptable) and must be received by the Registrar, or postmarked if sending via USPS, on or before May 1, 2024.
- If a submitted cancellation is not acknowledged by the Registrar, the registrant should request confirmation to verify receipt.
- Refunds will not be made after this date except in case of extreme emergency and approved by the Seminar Executive Committee.
- The \$125 non-refundable registration fee will not be refunded in any case.
- In the event a class is canceled after class assignments are made, and the student chooses to not attend the seminar, the seminar fee, less the \$100 non-refundable registration fee, will be reimbursed.
- In the event of cancellation, if the student received pre-work, he or she will receive the remainder of the kit and the student will pay the full kit fee plus shipping.
- In the event of cancellation and no pre-work was sent, it is the teacher's prerogative to allow refunding of the kit fee. If no kit fee refunds are specified in a teacher's contract, the kit will be made available to the student. Any costs incurred in delivering the kit are the responsibility of the student.
- No refund requests will be considered after 30 days of the close of the seminar.
- All refunds will be made by check within 50 days of the close of the seminar.

Covid Policy and Health Policy for Seminar 2024

Please check the Seminar website for the latest up to date information. This policy is subject to change. This is the current policy as of November 12, 2023.

We want to keep everyone healthy and safe

1. Remember that COVID and other respiratory illnesses can pose a significant health risk to some of our members. As a community, we are all responsible for taking steps to protect each other and reduce spread of illness.
2. Everyone who has any health concerns should consider wearing a high quality mask in the classroom and when in crowded places to protect yourself and others.
3. Everyone should stay current on vaccinations for COVID and other respiratory illnesses.
4. Please stay home and do not attend Seminar if you have symptoms like coughing, sneezing, congestion, or fever, and/or if you are currently testing positive for COVID-19.
5. Wear a high quality mask for 10 days after a known exposure. Wear the mask particularly when in contact with others indoors. If you have had a Covid exposure, please stay home and do not attend Seminar.
6. **If you test positive while at Seminar** – please let us know and remain isolated per the CDC Guidelines.
DO NOT ATTEND CLASS.

If you have a Covid exposure or test positive for Covid within 10 days prior to Seminar, please contact the Registrar to cancel your attendance at Seminar. We will credit you for the class fee. Please also cancel your hotel reservation directly with the hotel. We don't know if the teachers will release the kits in the event you need to cancel your attendance at Seminar. We ask that you identify someone from your chapter to take your Seminar Goody bag (and your kit if allowed) home.

Please consider testing immediately prior to attending Seminar. We have a number of people in our population that could be adversely affected by these diseases.

If you test positive for Covid while at Seminar, or feel ill, please let us know immediately and stay isolated in your room. The Wellness Committee will contact your teacher to let them know you will not be attending class. Please contact the Seminar Chair – information in Handbook. We will credit you for your class fee, prorated by your attendance before you became ill.



Hotel Information

EMBASSY SUITES by Hilton™

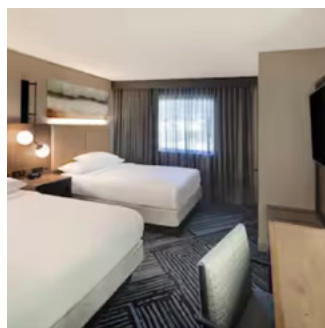
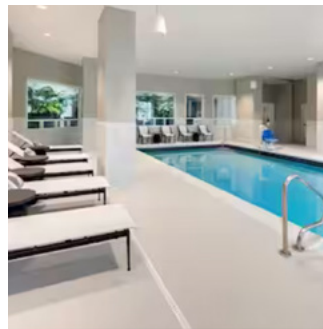
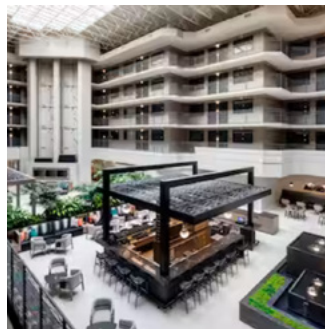
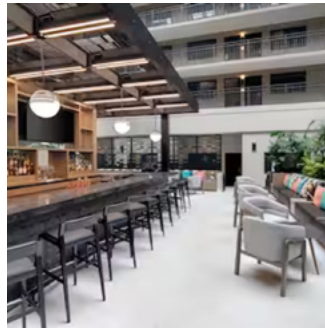
101 McInnis Pkwy,
San Rafael, CA 94903

Phone: 415.499.9222

Hotel link for attendees will be made available on Seminar website approximately January 1, 2024.

Spacious suites near Marin County Civic Center

Relax in a two-room suite at our hotel minutes from Northgate Mall and the Marin County Civic Center. We're between wine country and San Francisco, putting the Golden Gate Bridge, Bay Area attractions, and Sonoma wineries within a 30-minute drive. Enjoy free made-to-order breakfast and our complimentary evening reception.



Facility Amenities

- Connecting Rooms
- Free made-to-order breakfast
- Complimentary evening reception
- Non-smoking rooms
- Digital Key
- On-site restaurant
- Indoor pool
- Fitness center
- Pet-friendly rooms
- Room service
- Meeting rooms